

Gender and Health Research Agenda Setting for COVID-19: Initial Results

Thematic Group 1: Health Status and behaviour

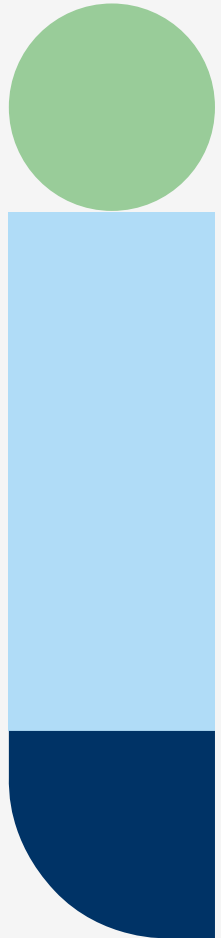
Explores the sex and gender differences in COVID-19 risk, morbidity and mortality; the uptake of non-pharmaceutical interventions and vaccines; and impact on non-COVID health outcomes

Coordinator: Ateeb Ahmad Parray (Bangladesh)

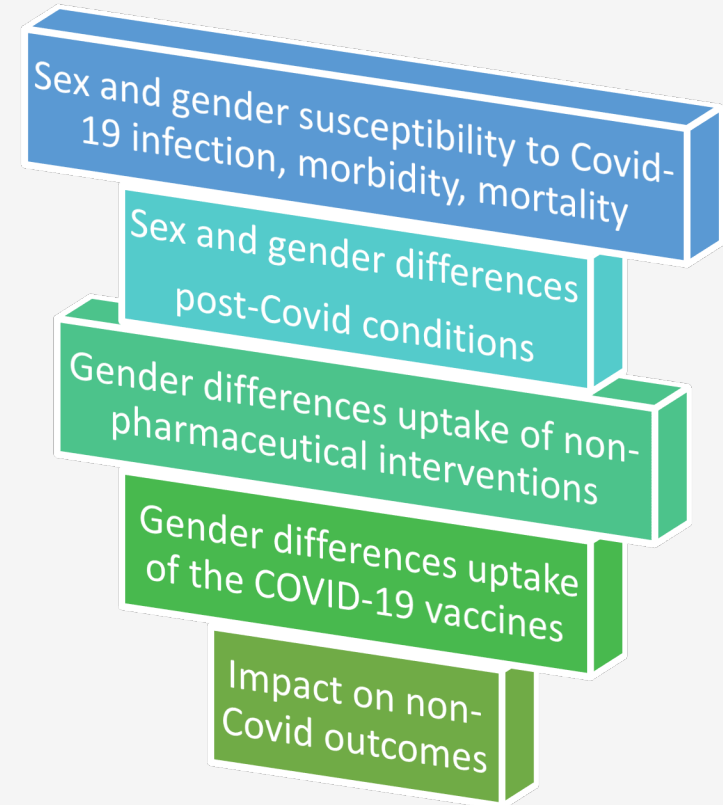
Co-leads: Dr Lisa Thorley (United Kingdom) and Dr Yi Myint Swe (Myanmar)

Steering committee focal point: Dr Claudia Lopes (Malaysia)

Thematic group report process & themes



- 34 contributors across genders, regions, organizations
- 3 evolving drafts between Jan 2021 and March 2021
- 41 research questions
- 5 themes
- 111 current survey responses



Current thematic 10 top priorities: rank by combined impact

Rank	Research Question	Combined impact (1: lowest; 4 highest)	Urgency 1: long term, 2 med. Term, 3: short term
1	Do the gender differences in the trust, acceptance and uptake of COVID-19 vaccines vary across social categories?	3.76	2.52
2	Are there gender differences in the acceptance and uptake of COVID-19 vaccines?	3.59	2.50
3	How do the sex and gender determinants of COVID-19 infections, acute morbidity and mortality intersect with other social categories?	3.46	2.36
4	How have women and girls in low resource settings managed their menstrual needs during the COVID-19 lockdown?	3.25	2.57

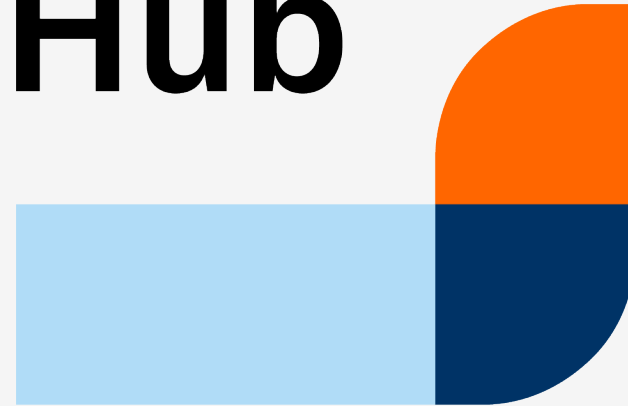
Current thematic 10 top priorities: rank by combined impact

Rank	Research Question	Combined impact (1: lowest; 4 highest)	Urgency 1: long term, 2 med. Term, 3: short term
5	How is sex and gender related vaccine data and emerging evidence communicated to national policy makers and to the public?	3.54	2.22
6	How does post-COVID conditions affect pregnant and postpartum women, and their foetus/infants across various contexts?	3.56	2.14
7	What are the biological and social determinants underpinning sex and gender differences in COVID-19 infections, acute morbidity, and mortality?	3.33	2.36
8	What are the most effective strategies for debunking myths and countering misinformation about COVID-19 for different groups of women, men and gender diverse individuals ?	3.31	2.38

Current thematic 10 top priorities: rank by combined impact

Rank	Research Question	Combined impact (1: lowest; 4 highest)	Urgency 1: long term, 2 med. Term, 3: short term
9	How has COVID-19 measures affected the mental health of working women when help for childcare is not available, but they are still expected to work and manage their households?	3.38	2.29
10	What was the impact of COVID-19 measures on the mental health outcomes of women, men, women, girls, boys, LGBTQI+ and gender-diverse persons?	3.48	2.17

Gender & Health Hub



www.genderhealthhub.org