

# Gender and Health Research Agenda Setting for COVID-19: Initial Results

Collaborative research agenda setting  
for evidence informed action and accountability





# Agenda

Plenary	
Breakout session	

Duration	Time	Agenda	Lead
15 mins	3:00-3:15pm	Introduction & overview	Asha George
5-10 mins	3:15-3:45pm	Breakout groups for Thematic Groups (TG) <ul style="list-style-type: none"><li>TG1: Health Status &amp; Behaviour</li><li>TG2: Therapeutics &amp; Diagnostics</li><li>TG3: Health Service Delivery</li><li>TG4: Social Determinants</li><li>TG5: Governance</li></ul>	Facilitators:  TG1: Claudia Marques Lopes TG2: Lavanya Vijaysingham TG3: Pascale Allotey TG4: Michelle Remme TG5: Asha George
		Breakout groups TG specific process & top 10 results Presenters <ul style="list-style-type: none"><li>TG1: Gita Mishra/ Australia</li><li>TG2: Jeannette Wolfe/ USA</li><li>TG3: Sedighe Hosseini Jebeli/ Iran</li><li>TG4: Atria Mier/ Spain</li><li>TG5: Mmabatho Motsamai/ Botswana</li></ul>	
10 mins		Breakout groups Discussants <ul style="list-style-type: none"><li>TG1: Tina Purnat/ Sweden</li><li>TG2: Shirin Heidari/ Switzerland</li><li>TG3: Jeanette Vega/ Chile</li><li>TG4: Mark Tomlinson/ South Africa</li><li>TG5: Agnes Soucat/ France</li></ul>	
10 mins		Breakout groups Open discussions	
10 mins	3:45-3:55 pm	Linkages with WHO COVID-19 Roadmap  General discussion & Thank you	Ana Maria Henao-Restrepo  Pascale Allotey
5 mins	3:55-4:00pm	Ways to keep in touch	Arinjay Butani

# Webinar outline and housekeeping

1. Utilize chat function to introduce yourself
2. Log questions in the Q&A function via the toolbar at the bottom of your screen
3. Remain muted to avoid background noise
4. Choosing 1 out of 5 breakout rooms\*
  - Scroll to the bottom of your screen and click meeting controls → Breakout room
  - Leave room to return to the main session

\* Only available for Zoom version 5.3.0 or higher



# Thematic Group Presenters, Discussants and Facilitators

## Thematic Group 1: Health status & behavior



**FACILITATOR**

Claudia Abreu Lopes  
UNU-IIGH



**PRESENTER**

Gita Mishra  
University of Queensland



**DISCUSSANT**

Tina D Purnat  
European CDC



## Thematic Group 2: Therapeutics & diagnostics



**FACILITATOR**

Lavanya Vijayasingham  
UNU-IIGH



**PRESENTER**

Jeannette Wolfe  
University of  
Massachusetts Medical  
School-Baystate



**DISCUSSANT**

Shirin Heidari  
World Health  
Organization



## Thematic Group 3: Health service delivery



**FACILITATOR**

Pascale Allotey  
UNU-IIGH



**PRESENTER**

Sedighe Hosseinijebeli  
Iran University of  
Medical Science



**DISCUSSANT**

Jeanette Vega  
University of Chile





# Thematic Group Presenters, Discussants and Facilitators

## Thematic Group 4: Social determinants



**FACILITATOR**  
Michelle Remme  
UNU-IIGH



**PRESENTER**  
Atria Mier  
Gender, diversity, and  
protection specialist



**DISCUSSANT**  
Mark Tomlinson  
Stellenbosch University

## Thematic Group 5: Governance



**FACILITATOR**  
Asha George  
University of the  
Western Cape



**PRESENTER**  
Mmabatho Motsamai  
The Afrolutionist



**DISCUSSANT**  
Agnes Soucat  
French Development  
Agency

# Background

## What?

- A shared and prioritized research agenda and framework for evidence-informed action to address gender and intersectionality in the global health and intersectoral COVID-19 response

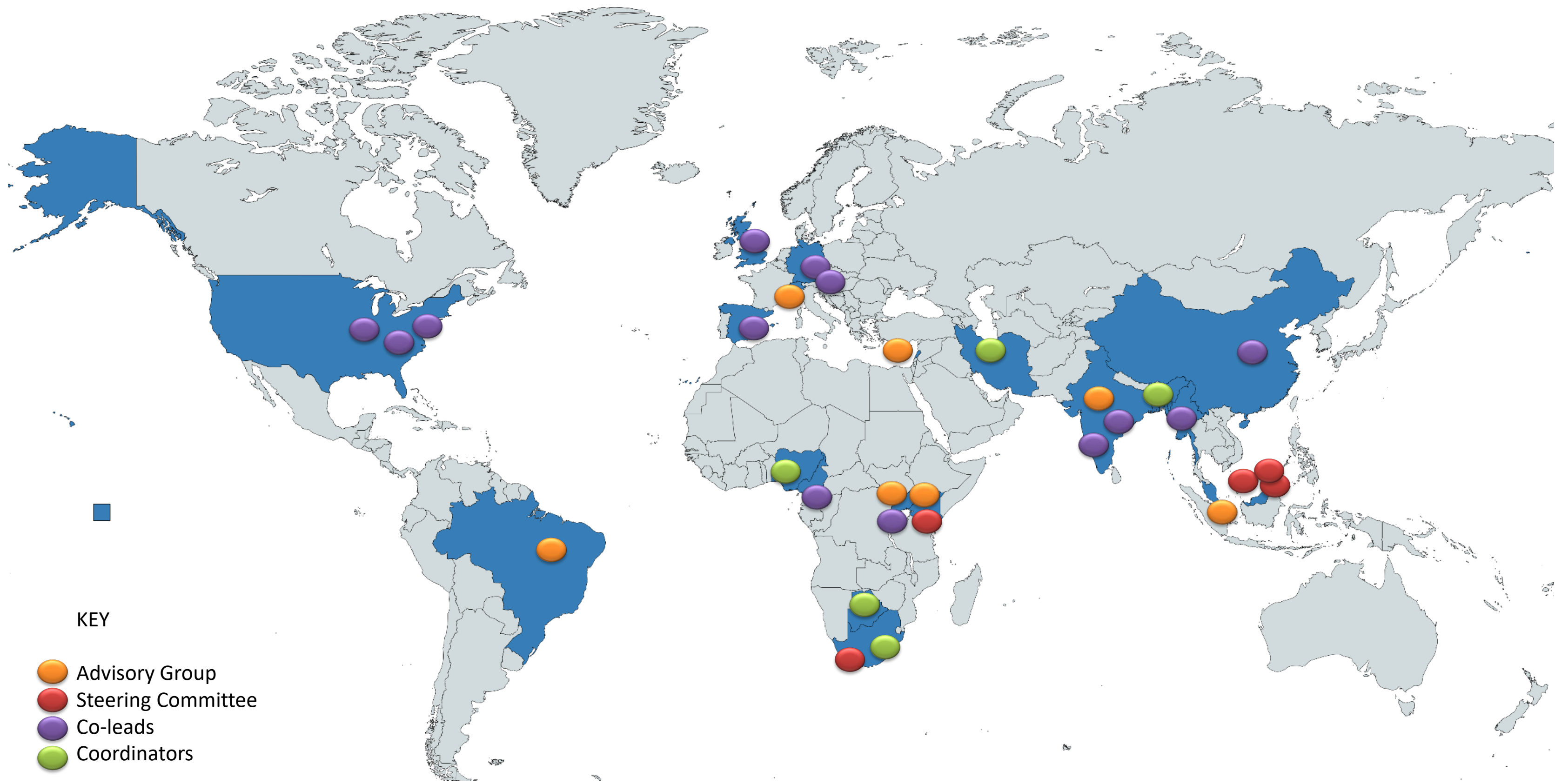
## Why?

- Provide a systematic and inclusive way to map gender & COVID-19 research needs to support policy and programming-relevant research and accountability
- Facilitate feminist solidarity in understanding, voice, and action from multiple communities of stakeholders

## How?

- In consultation with UN agencies under WHO leadership; WHO R&D Blueprint Gender and COVID-19 working group; SVRI research prioritization; etc
- Open calls for participation following feminist and decolonizing global health principles

# Team Leadership Around The World

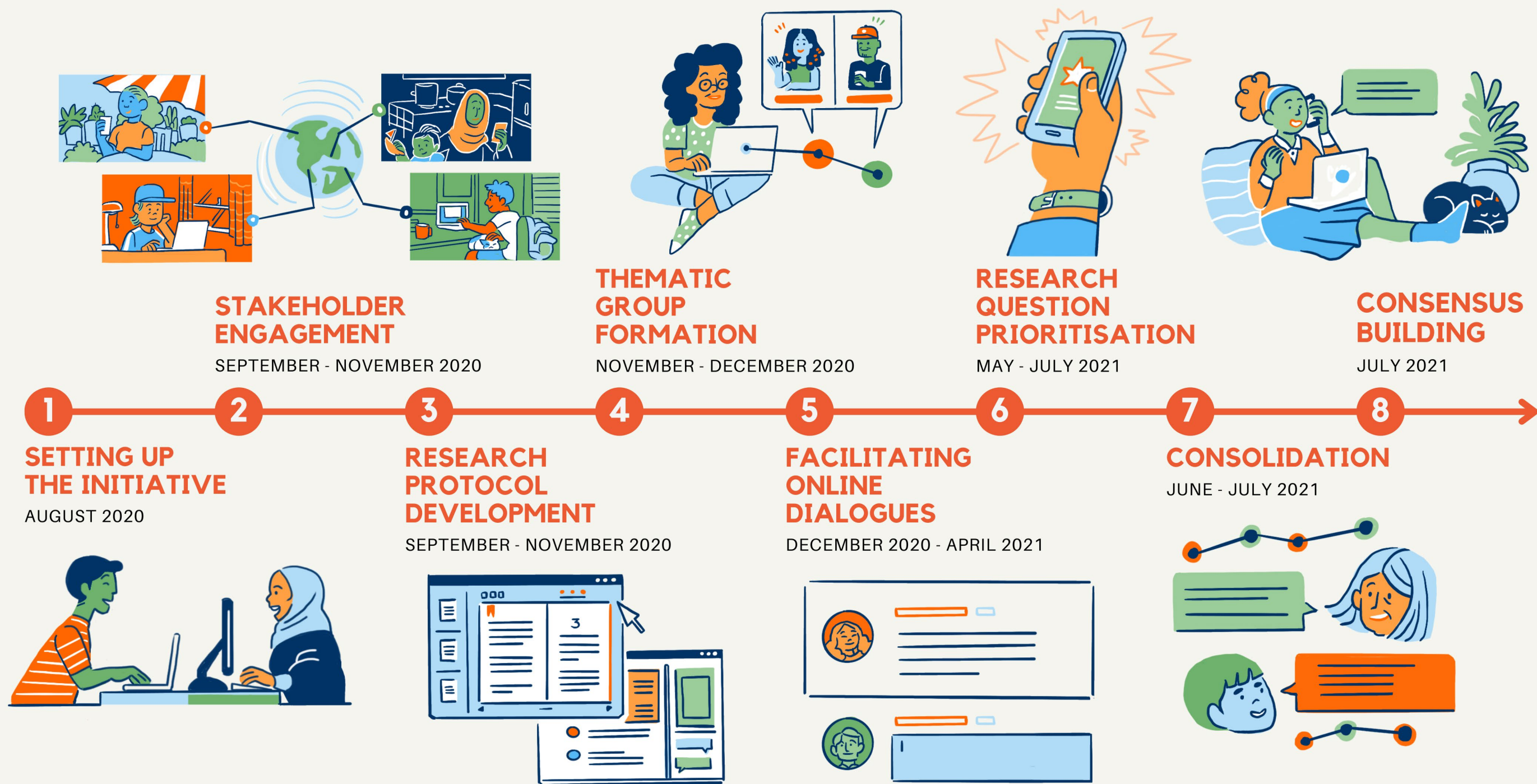


KEY

- Advisory Group
- Steering Committee
- Co-leads
- Coordinators



# Overall process





# Thematic survey responses

N=111 (1 Sept 2021)

## Organisation

University	38.71%
NGO	25.81%
Multilateral	9.68%
Independent	16.13%
Government	9.68%

## WHO Region

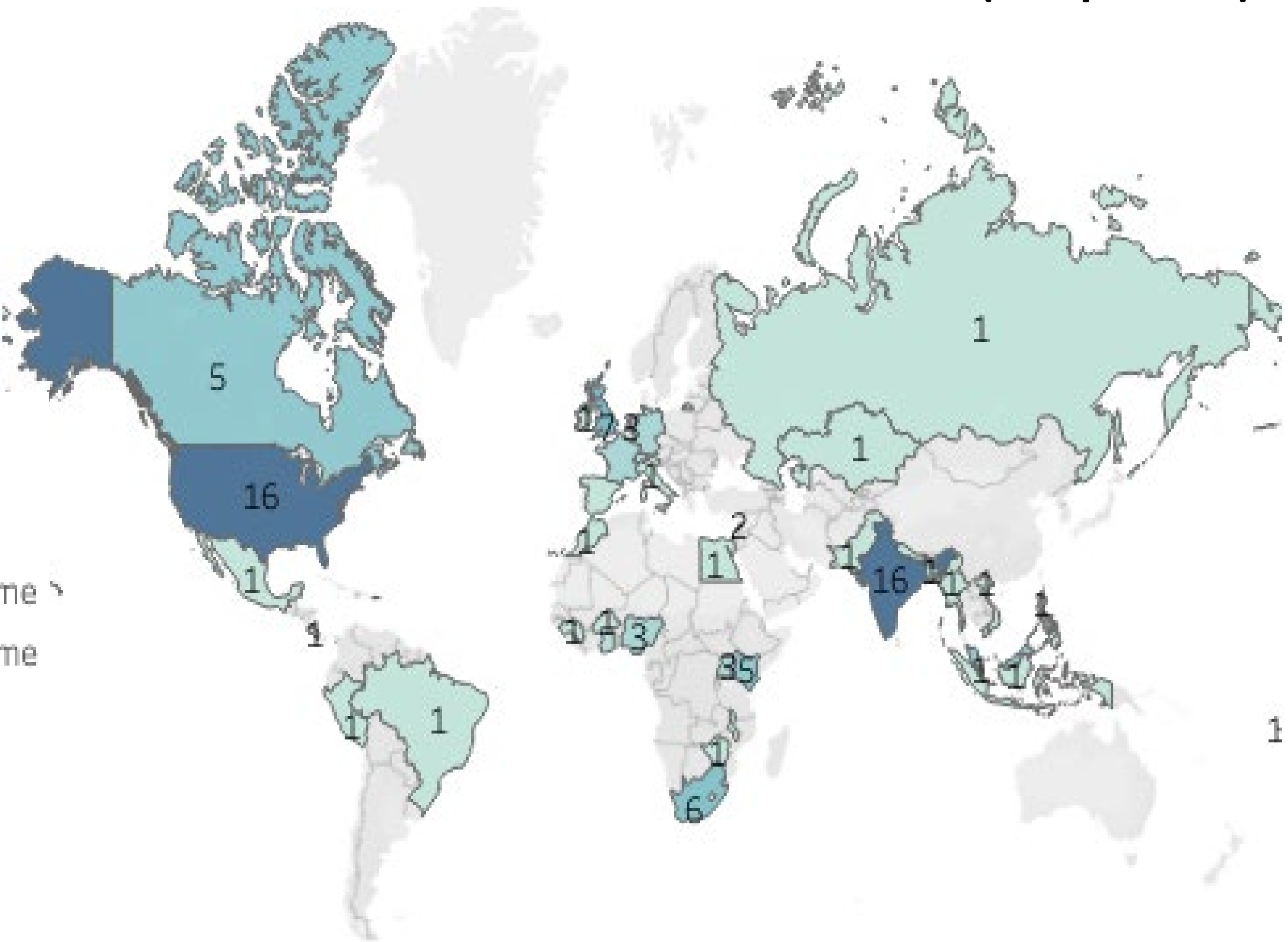
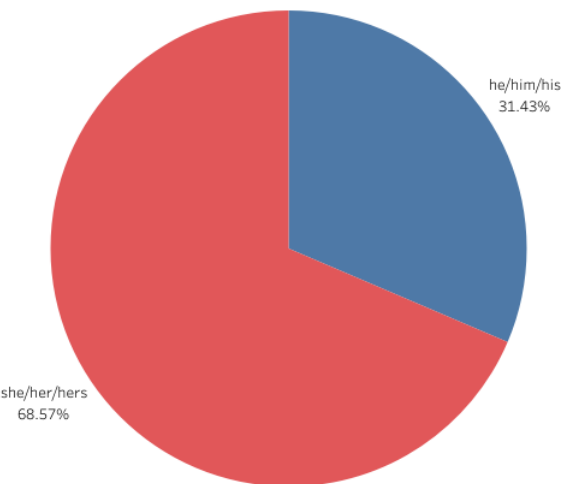
WHO_AMRO	23.81%
WHO_EURO	21.90%
WHO_SEARO	19.05%
WHO_Afro	21.90%
WHO_WPRO	8.57%
WHO_EMRO	4.76%

## Country Income

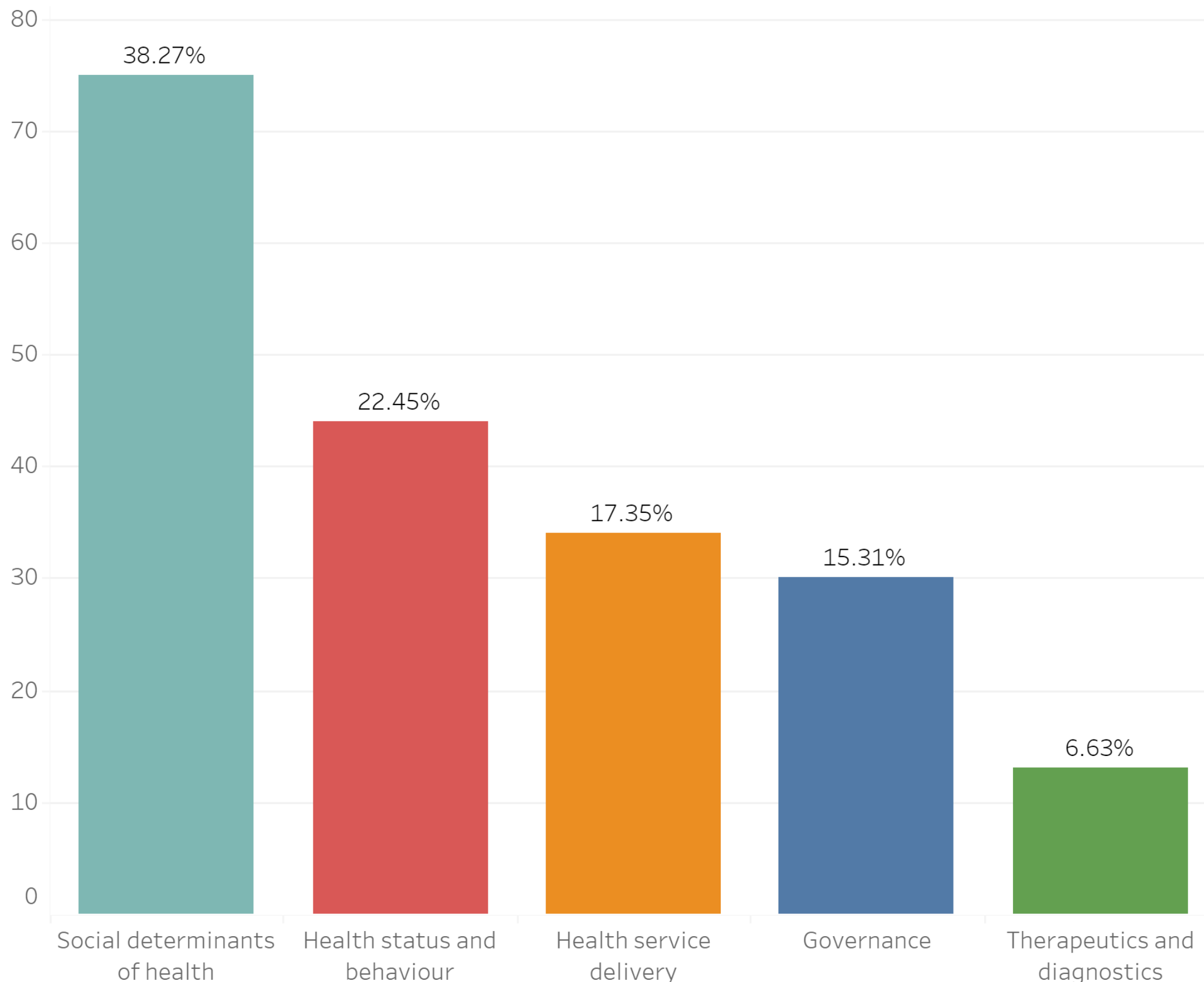
High income	40.95%
Upper middle income	19.05%
Lower middle income	33.33%
Low income	6.67%

## Country Income

High income	
Upper middle income	
Lower middle income	
Low income	



# Thematic survey responses



# Scoring criteria

**Impact** combines health benefit & gender equality

Potential **health benefit**  
1 very low, 2 low, 3 high, 4 very high

Improvements **gender** equality & empowerment of girls & women  
1 Not likely, 2 Somewhat likely, 3 Quite likely, 4 Highly likely

**Urgency**  
1 Long, 2 Medium, 3 Short term

# Health Research Agenda-Setting for Gender and COVID-19

## Preliminary Results



1. To participate in the survey, please click on one of the following links

English: <https://go.unu.edu/plysh> French: <https://go.unu.edu/sejdM> Portuguese: coming soon Spanish: coming soon

2. Select one or more themes

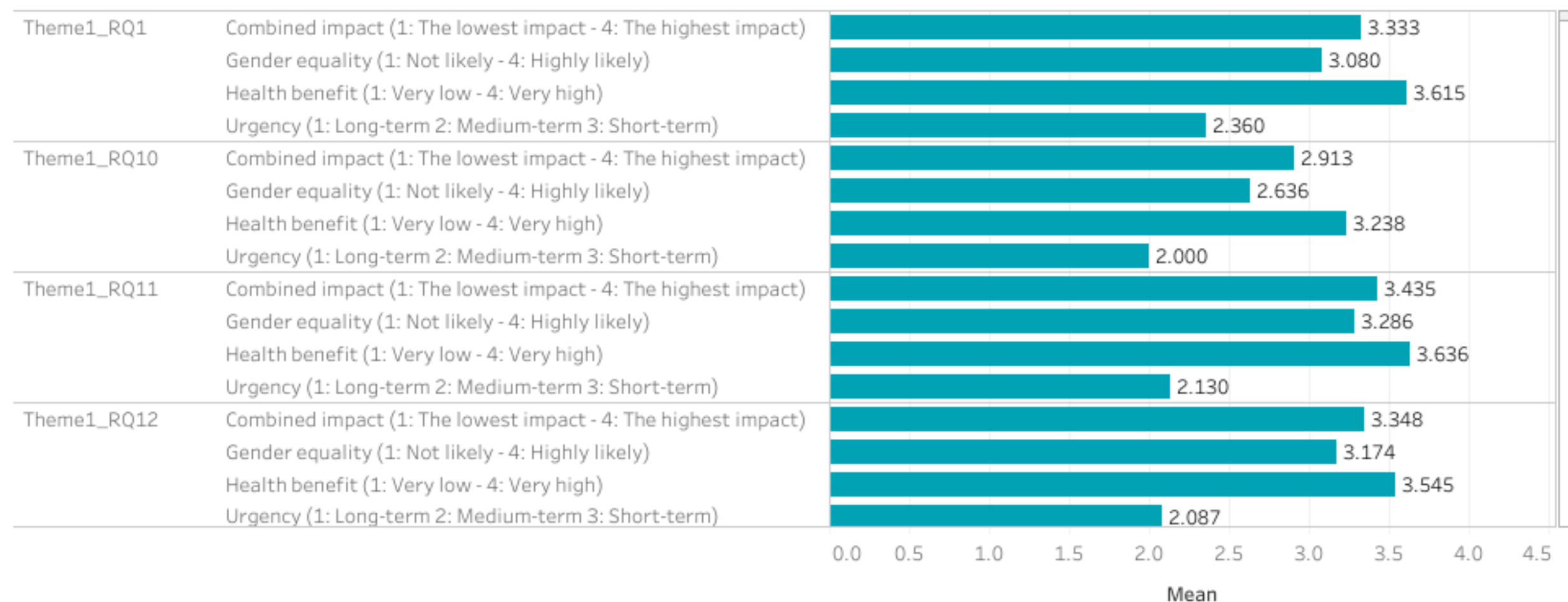
- ☒ Theme 1: Health status and behaviour
- ☒ Theme 2: Therapeutics and diagnostics
- ☒ Theme 3: Health service delivery
- ☒ Theme 4: Social determinants of health
- ☒ Theme 5: Governance

3. Select one or more criteria

- ☒ Combined impact (1: The lowest impact - 4: The highest impact)
- ☒ Gender equality (1: Not likely - 4: Highly likely)
- ☒ Health benefit (1: Very low - 4: Very high)
- ☒ Urgency (1: Long-term 2: Medium-term 3: Short-term)

4. The bars represent means for each criterion broken down by research question Please hover over the bars to see the research question. The colours correspond to themes. To order research questions in descending order of means,...

Total respondents:  
111



Interactive  
dashboard on  
emerging  
research  
priorities

[https://public.tableau.com/app/profile/claudia.lopes6526/viz/RAS\\_survey/Dashboard1?publish=yes](https://public.tableau.com/app/profile/claudia.lopes6526/viz/RAS_survey/Dashboard1?publish=yes)



# Next steps

1. **Thematic prioritization surveys:** until September 30<sup>th</sup> 2021
  - French translation just released, Portuguese & Spanish coming soon
2. **Thematic report finalization and consensus building:** Early October 2021
3. **Overall prioritization:** Late October 2021
4. **Overall report finalization and consensus building:** November 2021

## Goals:

- Catalyzing a feminist health sector response with existing COVID-19 research, policy and practice communities: WHO R&D Blueprint, GLOPID-R, African Academies of Science, SVRI, Gender & COVID-19 working group, etc
- Joint resource mobilization to implement research priorities across stakeholders

